



FERTIKIT 3G PL

OVERVIEW

FertiKit™ 3G is a fully-configurable, cost-effective fertilizer/acid dosing unit system that carries out precise Nutrigation™. Operating in four modes depending on site conditions, FertiKit 3G optimizes the available water flow rate and pressure usage of the main irrigation line to ensure high efficiency at a low investment. Bringing together over a decade of technological know-how and experience, FertiKit 3G maintains a proven track record under the most stringent environmental conditions.

HIGHLIGHTS

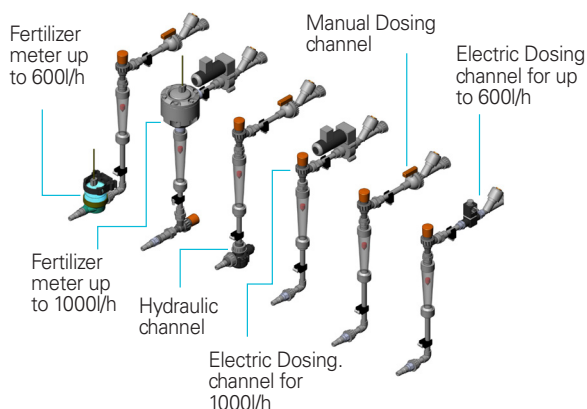
- Modular Nutrigation system
- Wide range of soil/substrate applications
- Built around a standard platform
- Minimal investment requirement
- Efficient water, fertilizer and energy consumption
- Unrivaled range of irrigation water capacities
- Quantitative or proportional Nutrigation capabilities
- Guaranteed EC and pH control
- Almost completely maintenance-free Venturi operations – no moving parts
- Highly accurate dosing channels
- Fast and efficient Nutrigation recipe adjustments
- Manual or fully automated operations
- Easy integration into existing irrigation systems, Netafim's NMC, and third-party controllers

BENEFITS

- Easy to install and maintain system
- In-house developed offering
- Broad application coverage, including open fields, orchards Etc'
- Highly profitable price/performance ratio



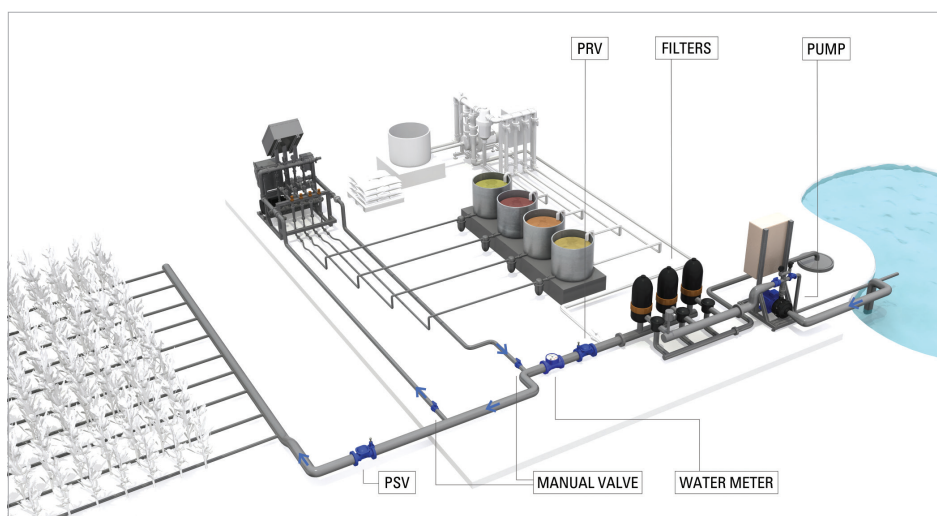
FERTIKIT 3G DOSING CHANNELS RANGE





FERTIKIT 3G PL

TYPICAL INSTALLATION



COMPONENTS

- Quick-action dosing valves
- Wide range of integrated accessories and peripherals
- High-quality components and PVC piping
- Aluminum, corrosion-resistant frame with adjustable legs

CAPABILITIES

- Versatile flow capacity: from 0.1Ha (nursery) to 400Ha (suitable for sugarcane plantations, and all other field crops and orchards)
- Up to 6 x highly accurate 50-1,000 l/hour (13-265 GPH) fertilizer/acid dosing channels

* For applications requiring over 6 dosing channels, please contact Netafim*

FEATURES	STANDARD	OPTIONAL
Controller	NMC – PRO, NMC-XL, NMC-JUNIOR According to customer need	Other controllers in the market or manual system without controller
EC/pH Control	Single measurement	None
Flow Rate	20 – 700 m ³ /hour (85 - 3000 GPM)	
Dosing Channel	Up to 6 x 50-1000 l/hour (13-250 GPH)	Concentrated Acid channel x 50 l/hour (13 GPH)
System Pressure	2.5– 6.5 Bar (36 – 94 PSI)	Up to 9 Bar (130 PSI)

For more information, including user and installation manual, please log in at: <http://www.netafim.com/product/fertikit-3g>

E-MAIL: PRODUCTS_SOLUTIONS@NETAFIM.COM